

mirial

ClearSea Typical Deployment Scenarios

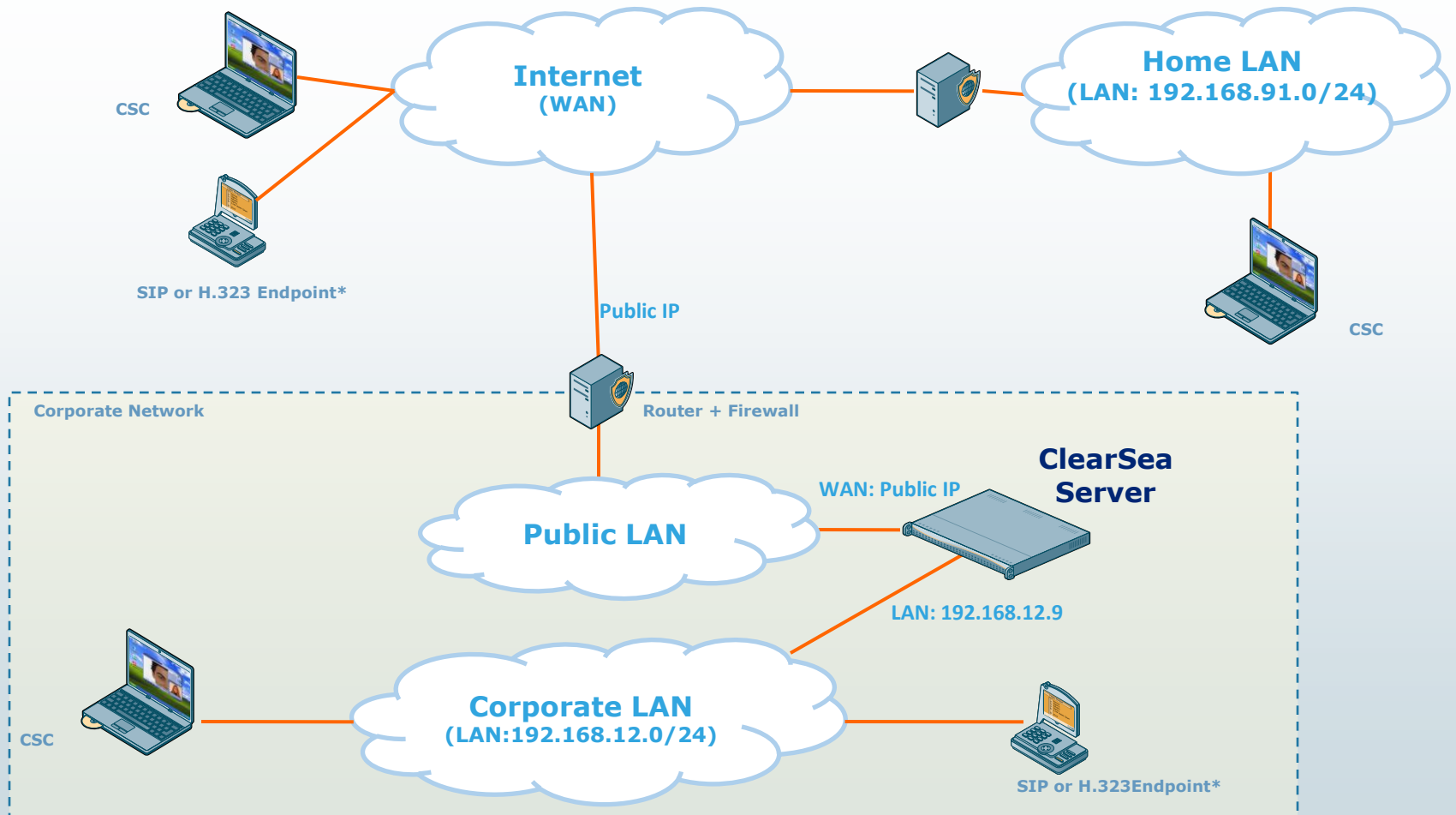
March 2011

ClearSea Server can be deployed in a wide range of configurations depending on the company network requirements.

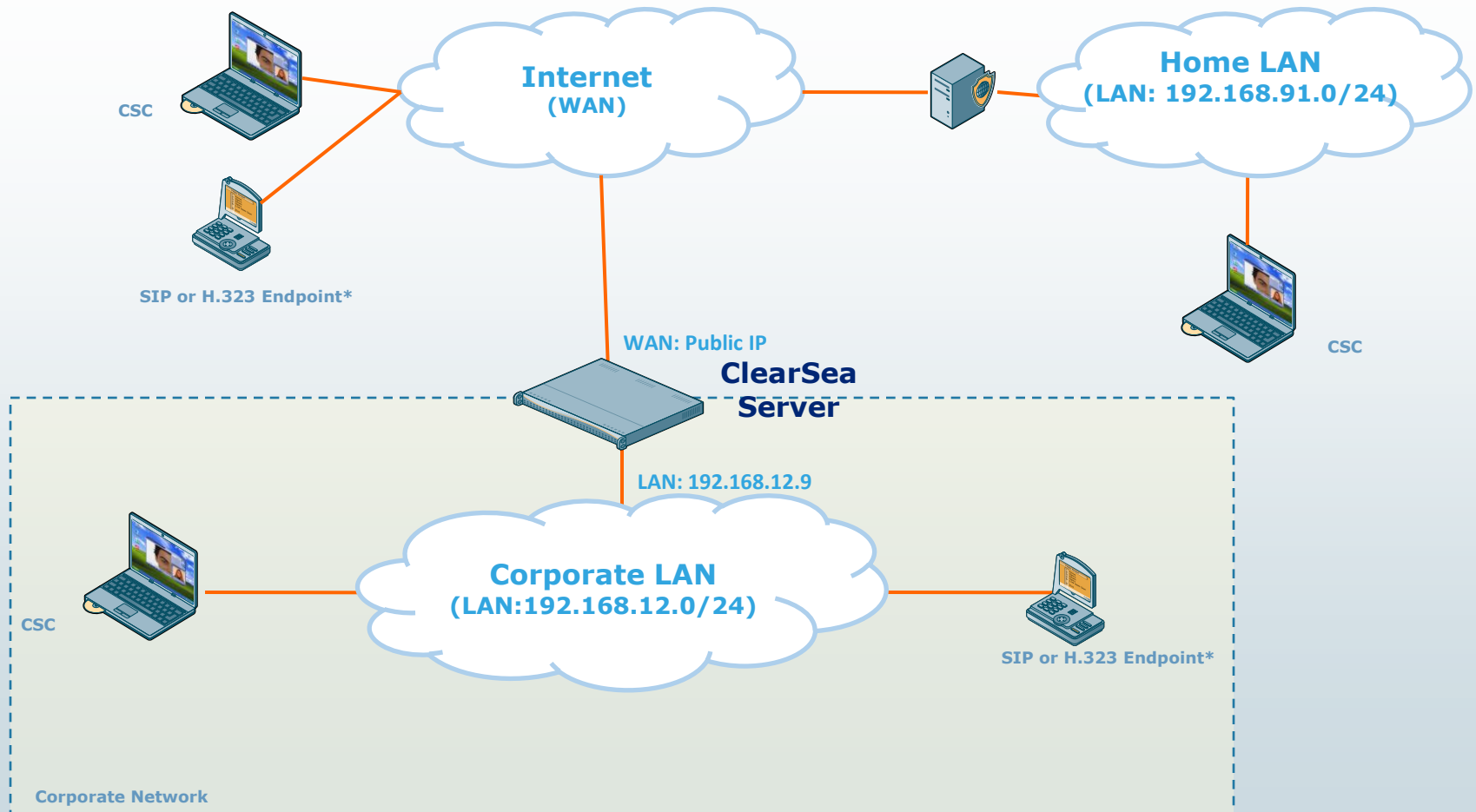
The following diagrams describe some typical deployments:

1. LAN and Public IP with corporate firewall (recommended)
2. LAN and Public IP (recommended)
- 3a. LAN and Public IP with Corporate Firewall/NAT (different subnets)
- 3b. LAN and Public IP with Corporate Firewall/NAT (same subnet)
4. LAN interface only
5. WAN interface only, Public IP

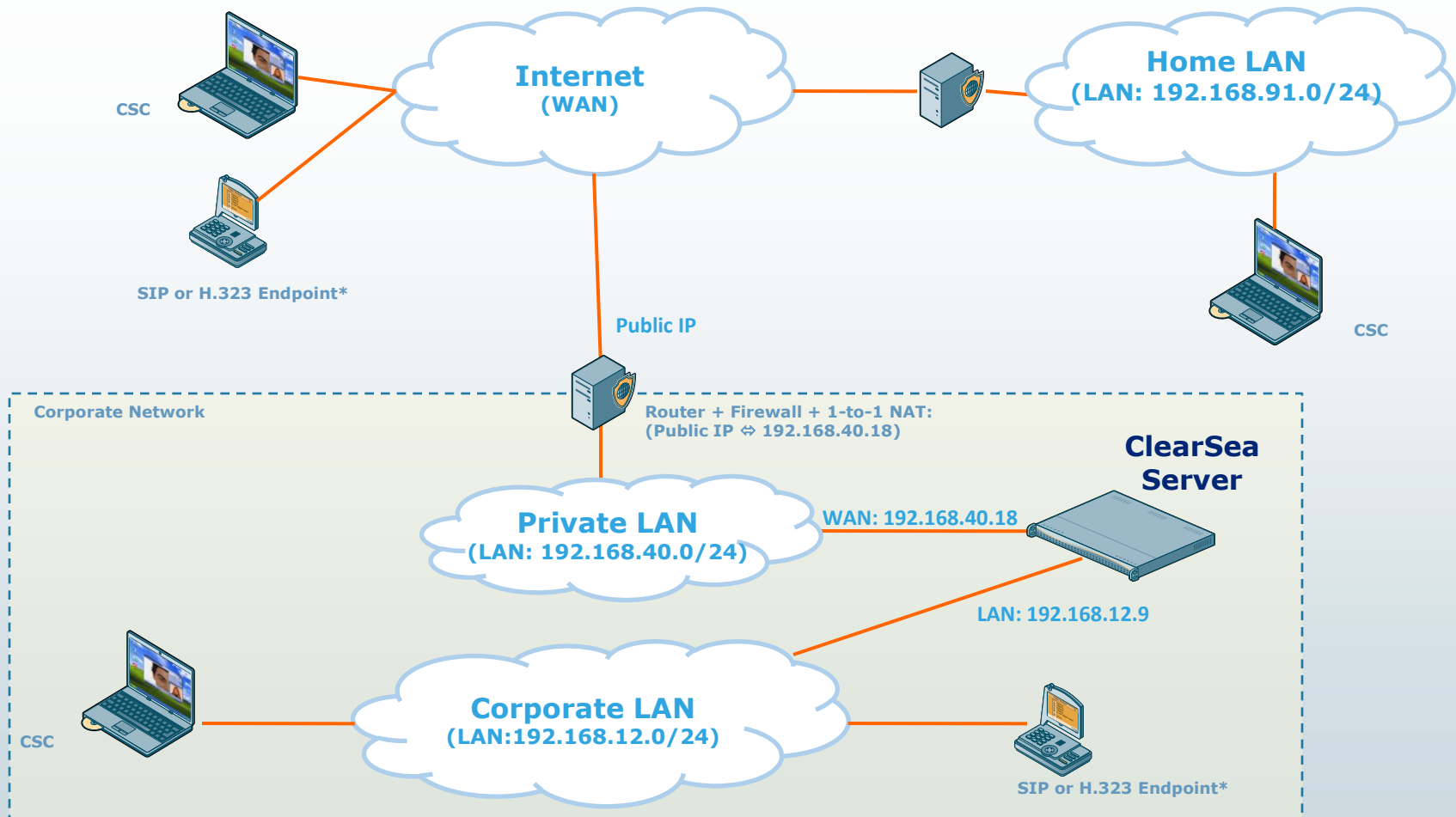
1: LAN and Public IP with corporate firewall (recommended)



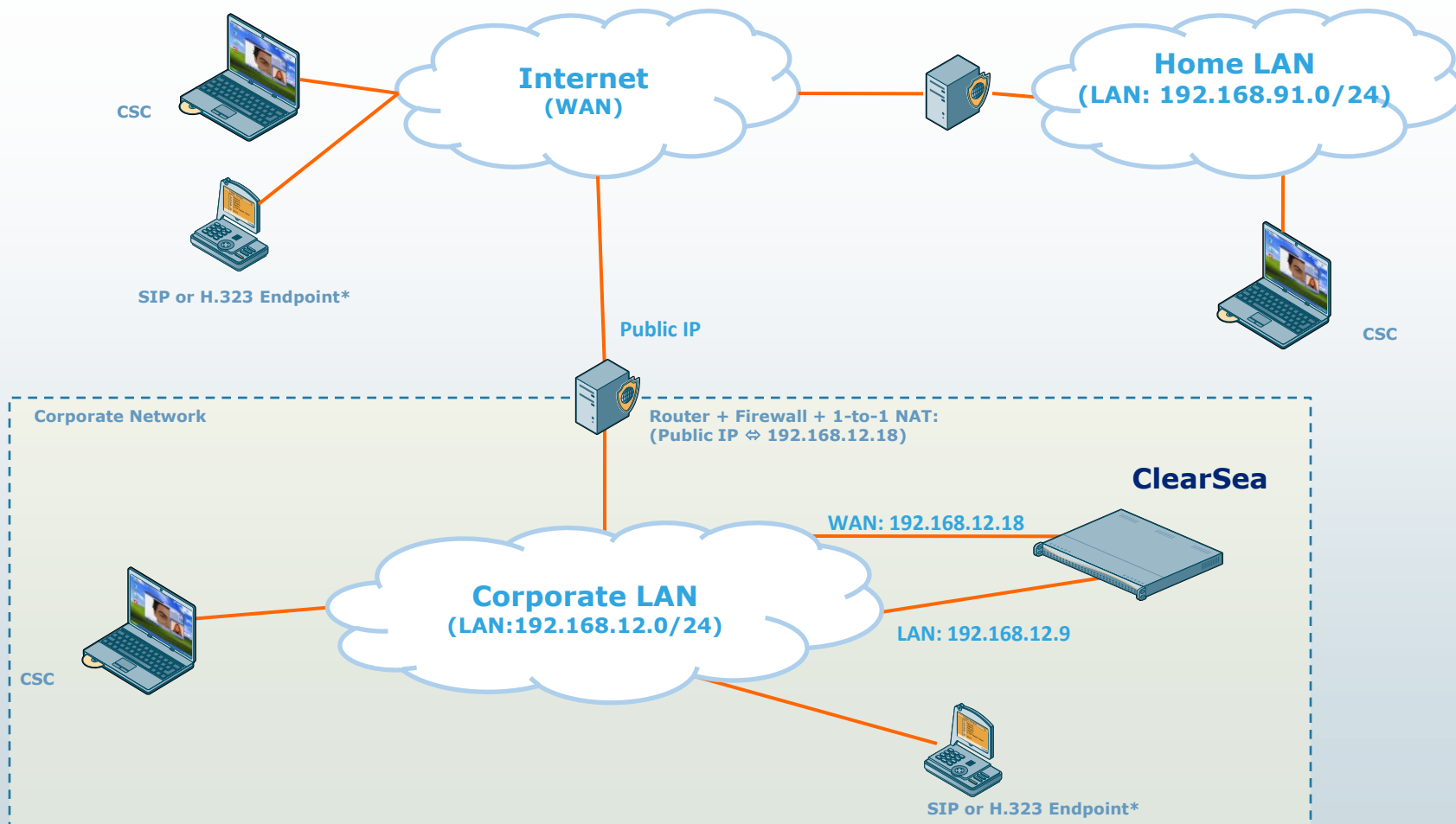
2: LAN and Public IP (recommended)



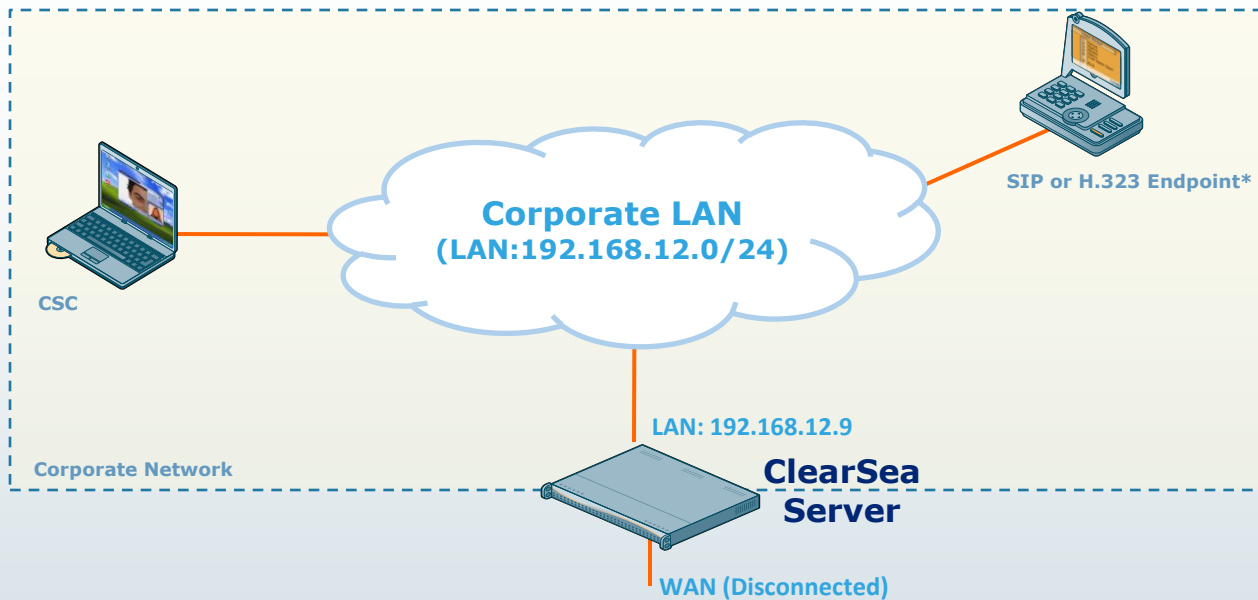
3a: LAN and Public IP with Corporate Firewall/ NAT (different subnets)



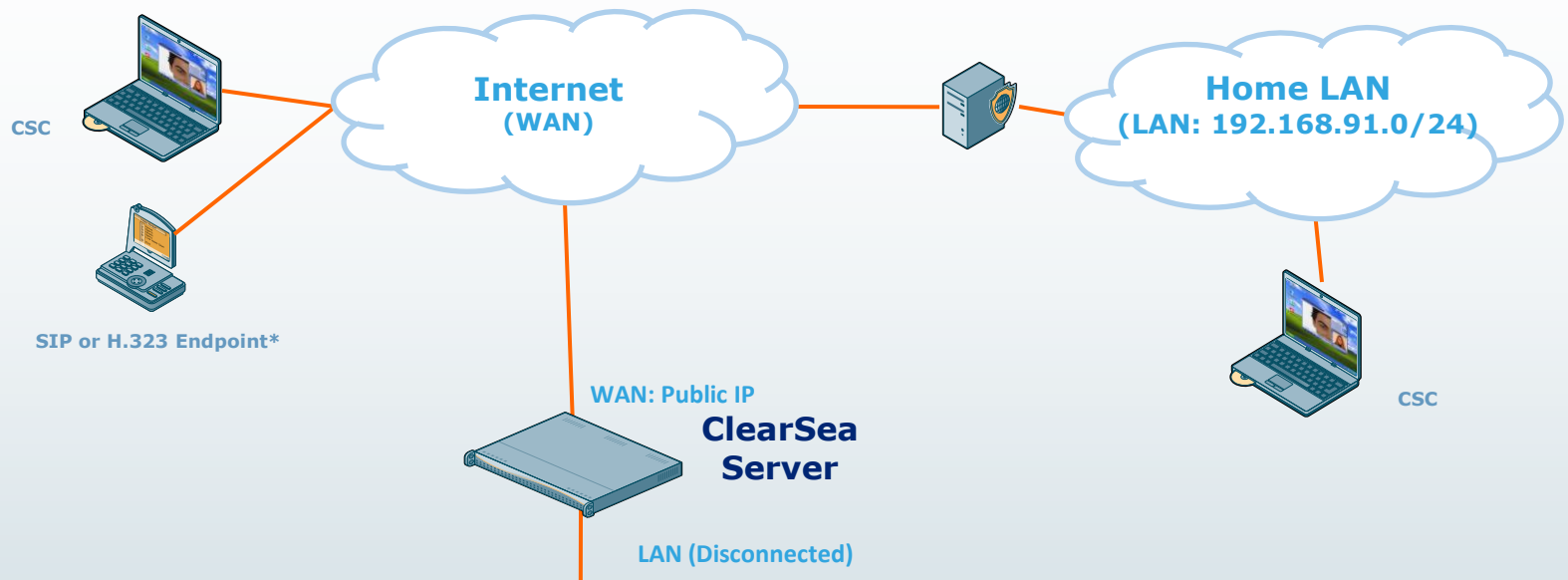
3b: LAN and Public IP with Corporate Firewall/ NAT (same subnet)



4: LAN interface only

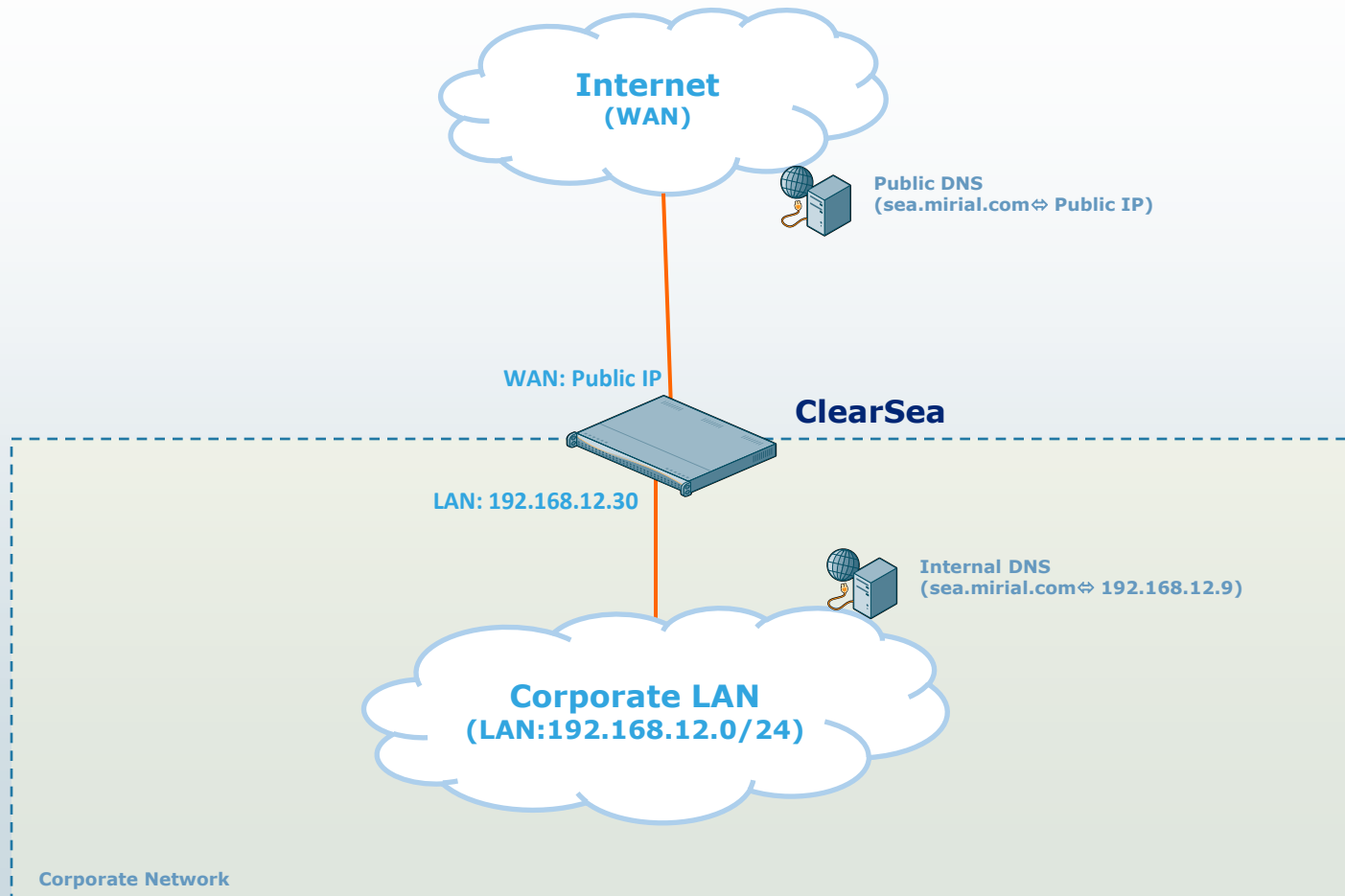


5: WAN interface only, Public IP



- ➔ DNS recommended scenario
- ➔ DNS recommended configurations
- ➔ Corporate Firewall recommendend configuration

DNS recommended scenario



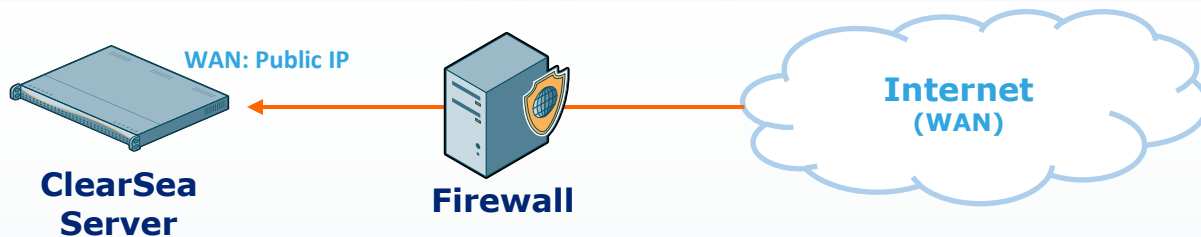
DNS recommended Configurations



- ➔ Internal DNS: configure the internal DNS in order to resolve the IP Address of ClearSea Server LAN Interface, e.g.:
 - ClearSea Server Domain: sea.mirial.com
 - ClearSea Server LAN Interface IP Address: 192.168.12.9
 - DNS Entry => Domain: sea.mirial.com ⇔ IP Address 192.168.12.9

- ➔ Public DNS: configure the Public DNS in order to resolve the IP Address of ClearSea Server WAN Interface on Public IP, e.g.:
 - ClearSea Server Domain: sea.mirial.com
 - ClearSea Server WAN Interface IP Address: 89.96.156.170
 - DNS Entry => Domain: sea.mirial.com ⇔ IP Address 89.96.156.170

Corporate Firewall: Inbound Traffic Filtering Rules



Internet to ClearSea Server				
		From: Any IP Address	To: IP Address of ClearSea Server	
	Protocol	Source Port	Destination Port	Description
Administration	TCP	Any	8800	HTTP Control Panel
	UDP	Any	123	NTP
	UDP + TCP	Any	53	DNS
ClearSea Clients	TCP	Any	80	HTTP ClearSea Client Download
	TCP	Any	443	ClearSea Client provisioning
	UDP + TCP	Any	35060	Signaling
	UDP	Any	10000-19999	Media
SIP Endpoint	UDP + TCP	Any	5060	SIP
	UDP	Any	10000-19999	RTP
H323 Endpoint	TCP	Any	1720	H.225 / CS
	UDP	Any	1719	H.225 / RAS
	TCP	Any	10000-19999	H.245
	UDP	Any	10000-19999	RTP